

St Mary's RC Primary School School Newsletter

7 St Joseph's Street, Battersea, SW8 4EN

admin@st-marys-pri.wandsworth.sch.uk

0207 622 5460



MERRY CHRISTMAS



Wishing our families and staff a peaceful Christmas and New year!



During the season of Advent, Year 5 pupils proudly represented our school at the Diocesan Advent Service at St George's Cathedral. Our EY pupils have shared the Nativity story with parents, and our KS2 pupils lead the Advent Service at Our Lady of Mount Carmel and St Joseph. The final KS1 nativity will be today at 2pm-all KS1 families at welcome.



All-powerful God, increase our strength of will for doing good that Christ may find an eager welcome at his coming and call us to his side in the kingdom of heaven, where he lives and reigns with you and the Holy Spirit one God, forever and ever. Amen.



Our Mission Statement

'A man took a grain of mustard seed and sowed it in his field. Indeed the seed is smaller than all other seeds but when it is grown, it is greater than the herbs, and becomes a tree, so that the birds of the air come and lodge in its branches'

Matthew 13.31

Year 6 trip to High Ashurst!

Our Year 6 pupils embraced every opportunity during their school journey recently, and we could not be prouder of them. From the moment they arrived, they threw themselves into every challenge—quite literally, as their first activity was the climbing wall! Many felt nervous at first, but with encouragement from their peers and gentle support from staff, they pushed themselves far beyond what they thought they could achieve. It was inspiring to watch them face their fears and celebrate one another's successes. One of the key aims of the trip was to strengthen pupils' resilience and teamwork skills. Throughout the week, these qualities were placed at the heart of every activity. Whether they were problem-solving in small groups, tackling the high ropes, navigating tricky obstacle courses, or simply organising themselves in their dorms, the children had countless opportunities to develop independence, confidence, and cooperation. The dedication of both our school staff and the activity centre team ensured that every task encouraged growth, and the progress the children made—both individually and as a group—was remarkable. The pupils also demonstrated outstanding behaviour and represented the school beautifully. They showed kindness, patience, and a genuine willingness to support one another. It was wonderful to see new friendships forming, quieter pupils finding their voice, and groups working together with maturity and enthusiasm. They returned home tired but full of excitement, pride, and stories they will remember for years to come.





We wish Miss Gil well as she begins her maternity leave. We are so happy to say Miss Gil has had a beautiful baby boy over the recent days and both Miss Gil and baby are doing well!

Congratulations Miss Gil!

Punctuality

It is very important that all children arrive to school on time everyday.

For Nursery, the gate opens at 8:40am and school starts at 8:50am. For Reception to Y6, all gates open at 8:50am and school starts at 9am.

Please make sure your child arrives on time to ensure a positive start to the school day!



Friday 19th December

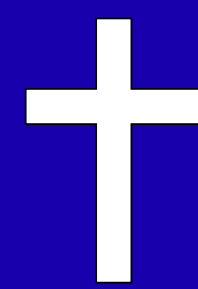
School will close early on this day for the Christmas break.

Please see our closing times below.

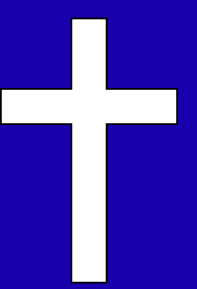
Nursery - 12:45pm

Reception - Y6 - 1pm

Monday 5th January is an INSET day - school will be closed to all children.



This weeks Wednesday Word is
CHRIST

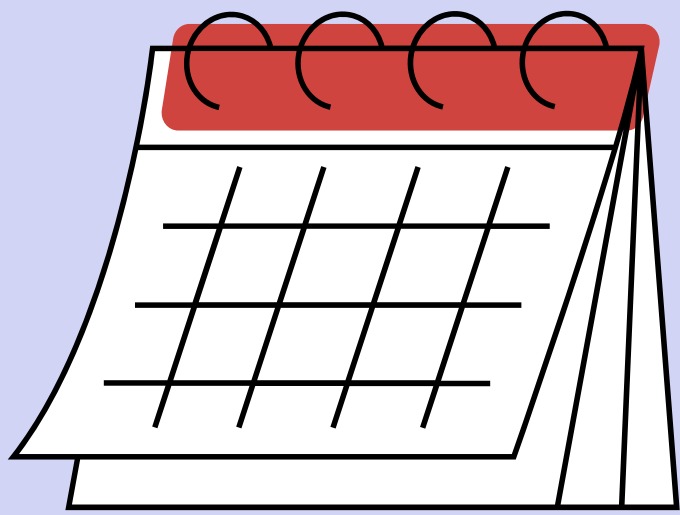


'Gaze upon Christ, consider him, contemplate him and desire to imitate him'

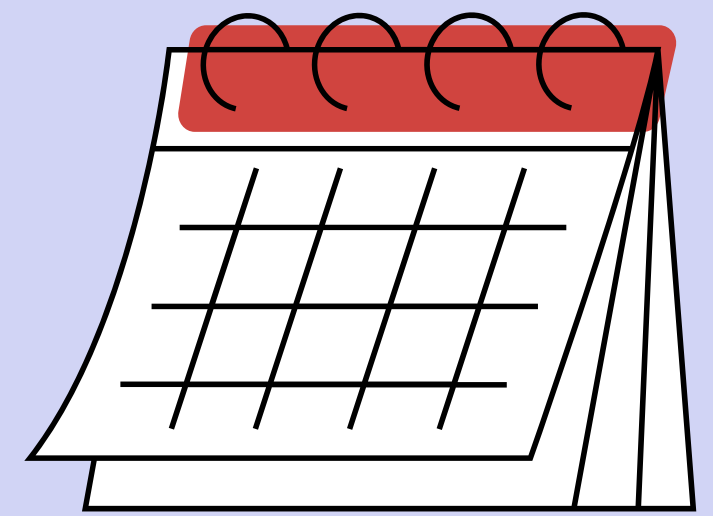
St Clare of Assisi

You might like to engage with CAFOD's online Advent Calendar which offers families daily reflections.

<https://cafod.org.uk/pray/advent-calendar>



Key Dates at St Mary's!



Date	Event
Tuesday 16th December	KS2 Advent church service at 2pm
Wednesday 17th December	KS1 Nativity at 2pm
Friday 19th December	Last day of term for Christmas – school to close at 1pm
Monday 5th January	INSET day
Tuesday 6th January	First day back for children
Thursday 8th January	Whole school pantomime show!
	Reception and Year 6 height and weight checks

December

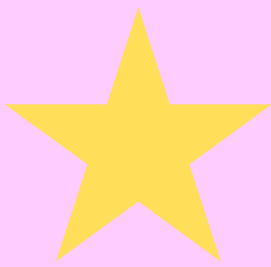
The season of Advent begins on Sunday 30 November; a time for preparing to welcome Jesus at Christmas and also get ready for when He comes again.

As this year draws to a close, we are also in the last few weeks of the Church's Jubilee Year, celebrating Jesus' message of hope and encouraging us to live as Pilgrims of Hope. Our Advent resources continue this theme - as we prepare, live and celebrate the hope that Jesus brings.

This newsletter shares some of the content children will experience in school throughout December, and suggests ways for you to engage with them about it. We hope it is a useful resource for your family prayer time.

To view the full version of the Ten Ten newsletter please click this link - <https://new.express.adobe.com/webpage/Vjmo5i0YPU8zc/>

Which class has the best attendance and punctuality this week?

Class	Attendance	Lates
Nursery	94%	5
Reception	92%	3
Year 1	86%	7
Year 2	96%	4
Year 3	99% 	17
Year 4	95%	11
Year 5	98%	4
Year 6	97%	5



LONDON

HOLIDAY COURSE

DECEMBER

Fun, engaging, inclusive, safe football activity for Boys & Girls of all abilities, during the Christmas period. Our Holiday Courses are a great way for boys and girls to develop their skills and meet new friends in a fun and safe environment.

Book now by clicking the direct link provided below.

[London December Holiday Course](#)

VENUE	DATE	AGE
Battersea Park All Weather Sports Ground	22nd - 23rd December	School Year 1-7
TIMES	COST	COURSE CODE
09.00-15.00	£72.00	SS-BSP-L-112