

St Mary's RC Primary School School Newsletter

7 St Joseph's Street, Battersea, SW8 4EN

admin@st-marys-pri.wandsworth.sch.uk

0207 622 5460



Dear parents/carers,

A huge thank you to our families!

We would like to extend a warm and heartfelt thank you to all the parents and carers who attended our recent Family Learning sessions and Parent Consultation meetings. Your involvement plays a vital role in your child's learning journey, and we are truly grateful for the time, enthusiasm, and support you continue to give.

It was wonderful to see so many families taking part in the family learning activities, exploring new ideas together, and celebrating the children's hard work. Your engagement helps strengthen the connection between home and school, and the children were excited and proud to share their achievements with you.

The Parent Consultation meetings provided a valuable opportunity for teachers and families to talk about progress, celebrate successes, and set new goals. Thank you for the thoughtful conversations, questions, and partnership in supporting your child's growth.

We appreciate your ongoing commitment and look forward to more shared learning experiences throughout the year.



Brilliant session, thank you

This session is very helpful for parents as they see what their children need help with at home.

I loved seeing the demonstration of how to practice the sounds so thank you



Our Mission Statement

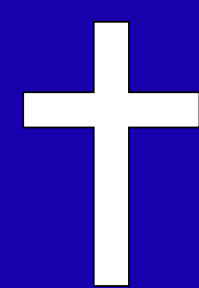
'A man took a grain of mustard seed and sowed it in his field. Indeed the seed is smaller than all other seeds but when it is grown, it is greater than the herbs, and becomes a tree, so that the birds of the air come and lodge in its branches'

Matthew 13.31

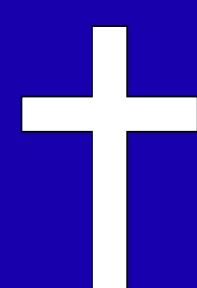
Attendance

Please take a look at this important link for more information regarding attendance.

<https://www.wandsworth.gov.uk/schools-and-admissions/schools/school-absence-and-attendance/>



This weeks Wednesday Word is
ADVENT



'Advent is like a springtime, when everything is renewed and so is fresh and healthy'
Mother Teresa

Friday 19th December

School will close early on this day for the Christmas break.
Please see our closing times below.

Nursery - 12:45pm
Reception - Y6 - 1pm

Punctuality

It is very important that all children arrive to school on time everyday.

For Nursery, the gate opens at 8:40am and school starts at 8:50am. For Reception to Y6, all gates open at 8:50am and school starts at 9am.

Please make sure your child arrives on time to ensure a positive start to the school day!



Family Learning Raffle!

Congratulations to Micke and Daisy's parents for winning our family learning raffle hampers!



Thank you to all the parents who supported our EYFS fundraiser on Wednesday this week. We had a fantastic turn out and every penny raised will go towards our early years department.

We raised just over £400

Thank you to all our parents for supporting this event!



As November begins, this season invites us to reflect and give thanks.

The month of November is a month of remembering all those we love who have died. The Church celebrates the Solemnity of All Saints, and All Souls Day, when we remember the men and women of faith who have gone before us. Nationally, on Remembrance Sunday, we remember those who have died in wars around the world.

Through this theme of remembrance and gratitude, our resources help children to reflect on Jesus, the King of Kings, who unites us with love and who is always with us, especially in times of difficulty.

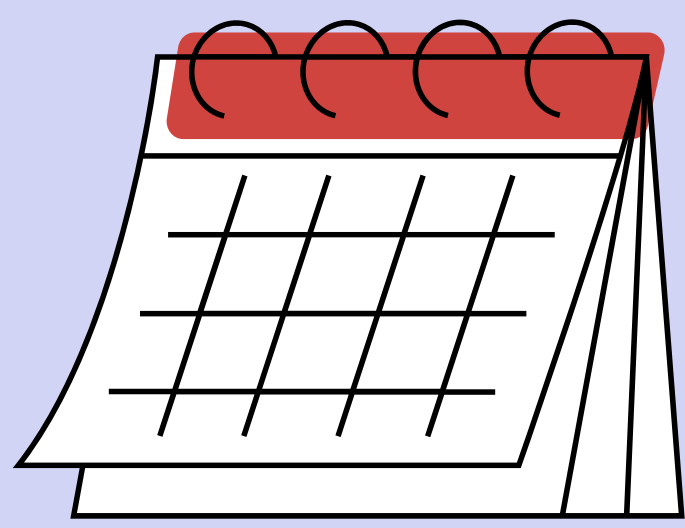
This newsletter shares some of the content children will experience in school throughout November, and suggests ways for you to engage with them about it.

We hope it is a useful resource for your family prayer time.

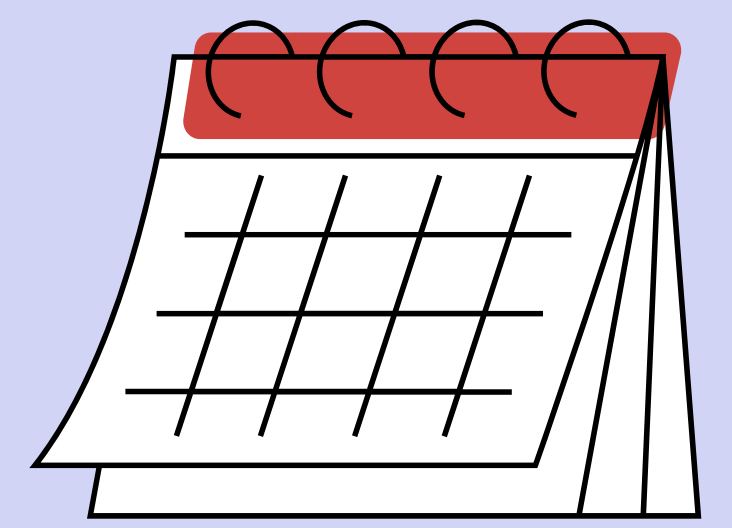
To view the full version of the Ten Ten newsletter please click this link - <https://new.express.adobe.com/webpage/Vjmo5i0YPU8zc/>

Which class has the best attendance and punctuality this week?

Class	Attendance	Lates
Nursery	99% 	5
Reception	93%	4
Year 1	90%	10
Year 2	91%	5
Year 3	98%	10
Year 4	95%	10
Year 5	96%	6
Year 6	95%	3



Key Dates at St Mary's!



Date	Event
Wednesday 3rd December – Friday 5th	Y6 residential trip to High Ashurst in Surrey
Friday 5th December	Timegivers trip to Eden Nature Garden
Monday 8th December	Children's flu jabs
	EYFS Nativity at 2pm
Tuesday 9th December	Year 3 trip to Natural History Museum
Wednesday 10th December	Nursery Pantomime trip to Battersea Art's Centre (am)
	Y4 to perform at Fairfield Halls for 'Wandsworth Winter Sounds' Concert
Thursday 11th December	Christmas dinner day!
	Christmas jumper day!
Tuesday 16th December	KS2 Advent church service at 2pm
Wednesday 17th December	KS1 Nativity at 2pm
Friday 19th December	Last day of term for Christmas – school to close at 1pm
Monday 5th January	INSET day
Tuesday 6th January	First day back for children
Thursday 8th January	Whole school pantomime show!
	Reception and Year 6 height and weight checks

DON'T MISS
BLACK FRIDAY
SALE ON

24 - 30 NOV 2025

IN-STORE AND ONLINE
STORES ARE OPEN SATURDAY - SUNDAY

GET 15% OFF
WHEN YOU SPEND £15+

School Uniform Direct
www.sud.co.uk

*EXCLUDES RAINBOW, BROWNIE, GUIDE, SCOUT WEAR AND CLEARANCE GARMENTS.
THIS OFFER CANNOT BE USED IN CONJUNCTION WITH ANY OTHER PROMOTIONS,
OFFERS AND COUPONS



LONDON

HOLIDAY COURSE

DECEMBER

Fun, engaging, inclusive, safe football activity for Boys & Girls of all abilities, during the Christmas period. Our Holiday Courses are a great way for boys and girls to develop their skills and meet new friends in a fun and safe environment.

Book now by clicking the direct link provided below.

[London December Holiday Course](#)

VENUE	DATE	AGE
Battersea Park All Weather Sports Ground	22nd - 23rd December	School Year 1-7
TIMES	COST	COURSE CODE
09.00-15.00	£72.00	SS-BSP-L-112